



# MEDIA AND ANIMATION

## Description

The Media and Animation program helps students conceptualize and practice processes in modern media, streaming and animation. Students learn media tools and software applications to create and edit digital video and audio content. Our lab provides access to the latest tools of the trade including Premier Pro, After Effects and Animate. Students use equipment including digital tablets, digital cameras and high-definition cameras to complete state of the art projects both on-location and in our Green Screen Studio. Classroom projects may include: stop-motion, motion graphics, animated characters and assets, theme videos, live action events and the opportunity to complete industry projects for clients.

## Employment Options

Additional training may be required for some options listed: Assistant Film Editor, Editor, Film Editor, News Editor, News Video Editor, News Videotape Editor, Non-Linear Editor, Online Editor, Video Editor, Videographer – Approximate Pay Potential: \$13-81 per hour.

## Courses

Digital Media Fundamentals  
Video and Audio Editing  
Special Effects and Animation  
Web and Media Portfolio

## Prerequisites

None

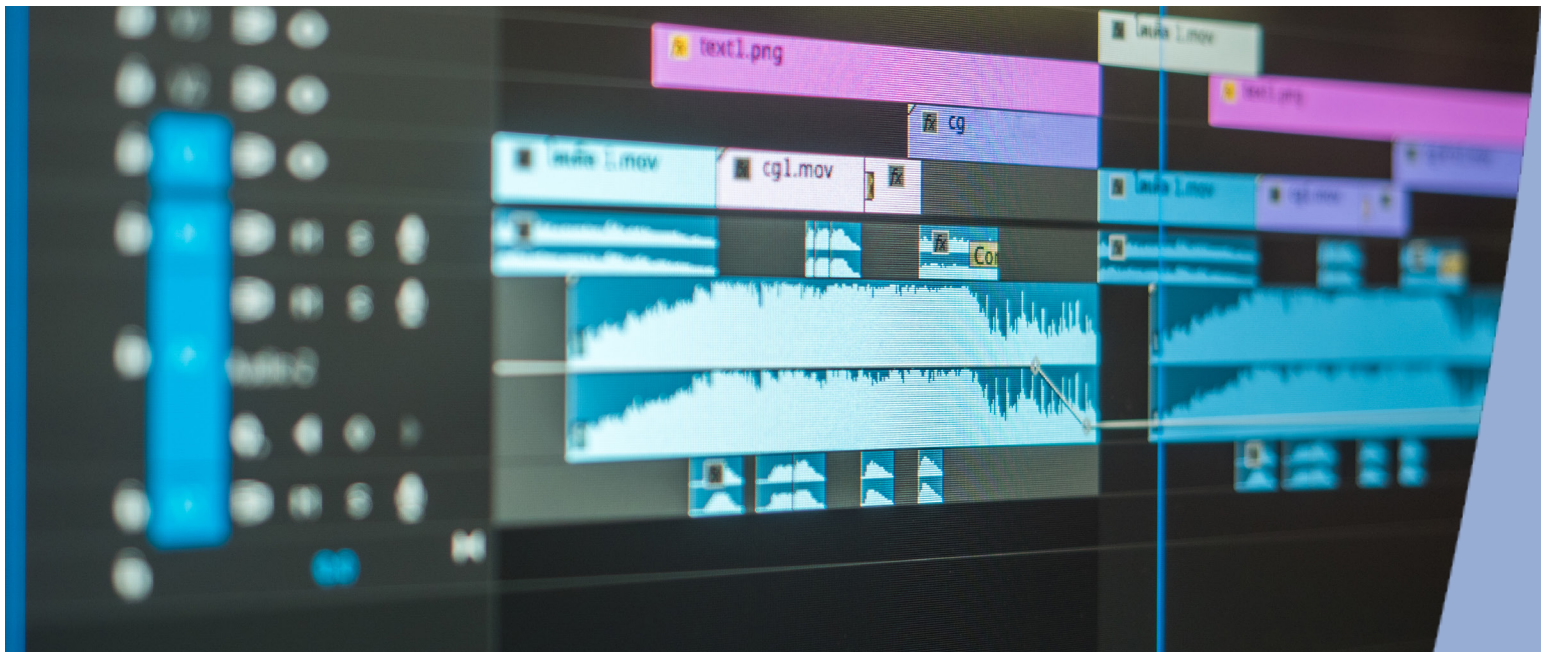


Contact Student Services  
for current tuition rates  
and enrollment options  
580-223-2070



**SOUTHERN  
TECH**  
www.sotech.edu

SouthernTech is an equal opportunity institution in accordance with civil rights legislation and does not discriminate based on race, color, religion, national origin, sex/gender, age, marital or veteran status, or disability in the operation of its educational programs, activities, recruitment, and admission practices. Concerns regarding this policy should be addressed to the Human Resource Director, 2610 Sam Noble Parkway, Ardmore, OK 73401.



## Application

Applicants must complete a SouthernTech Application for Admission. Additional information and applications are available at the SouthernTech campus and online at [www.sotech.edu](http://www.sotech.edu). Enrollment for this program is open to adults and partnering High Schools (juniors/seniors).

## Tuition

In-District Secondary Student: Free. Post-secondary Student (in-district): \$2.50 per hour; Post-secondary Student (Out-of-District): \$5 per hour; and Post-secondary Student (Out-of-State): \$7.50 per hour. Additional costs may include books, supplies, and miscellaneous fees.

## Financial Aid and Scholarships

This program is not yet approved for Federal Financial Aid; scholarships may be available.

## Student Organization

Business Professionals of America (BPA)

## Schedule

Postsecondary: 8:00-11:00 AM or 12:45-3:45 PM

Secondary: 8:00-11:00 AM or 12:45-3:45 PM

Visit our [Career Coach](#) for career employment information:



## Targeted Certifications or Credentials

Production Assistant  
Editor  
Producer  
Adobe Certified Professional (ACP):  
Digital Video Using Adobe Premier Pro  
Visual Effects & Motion Graphics Using Adobe  
After Effects  
Multiplatform Animation Using Adobe  
Animate CC

*Certifications may vary by Program and are subject to change without notice.*



**SOUTHERN  
TECH**

[www.sotech.edu](http://www.sotech.edu)

SouthernTech is an equal opportunity institution in accordance with civil rights legislation and does not discriminate based on race, color, religion, national origin, sex/gender, age, marital or veteran status, or disability in the operation of its educational programs, activities, recruitment, and admission practices. Concerns regarding this policy should be addressed to the Human Resource Director, 2610 Sam Noble Parkway, Ardmore, OK 73401.